

**MORPHEUS THEATRE**

**Gilbert and Sullivan's**

**TRIAL  
BY  
JURY**



**AN OUTDOOR CONCERT IN PUMPHOUSE PARK**

**JUNE 17-27, 2021**

# DIRECTORS' NOTES



Dear friends,

***Welcome back to live theatre!***

I have been very privileged to music direct for this outdoor production of *Trial by Jury* by W.S. Gilbert and

Arthur Sullivan. This was my first experience music directing for a show with rehearsals mostly online, and I must thank the cast for their patience as we dealt with navigating the technology. We started with completely online music rehearsals, which required the cast to do most of their note learning on their own, and not being able to sing together was a sadness with which we struggled. We were able to start outdoor rehearsals with small groups only just recently. But despite these challenges, our sense of community prevailed and a show was born. *Trial by Jury* is fast-paced and gives a short taste of the musical and literary genius of Gilbert & Sullivan, satirical of the status quo and ridiculous as always.

I am particularly pleased to present to you the hard work done by all the cast in preparing the concert you will hear in the second half of this production, including the winner and runner-up contestants of our Do You Think You Can Sing G&S Competition that was held in the spring. I hope that you enjoy the show and thank you for continuing to support G&S with Morpheus Theatre and community theatre in Calgary.

*Winnifred Hume,  
Music Director*



*No fabric went into the landfill during this production.*



Thank you for coming to our show! This has been a very challenging time as a new director, and together, with the help of this fabulous production team, we overcame some pretty big obstacles with the constantly changing restrictions during this past year and a bit.

The team of *Trial by Jury* have been so flexible and accommodating in bringing this show to life — and I want to thank everyone who helped make it happen. Typically, a Gilbert & Sullivan cast is comprised of approx. 25-30 people, however, we have a small, dedicated cast of 12 people in this show which creates a more intimate performance. This made it much easier to manage, given that rehearsals were carried out over Zoom, with only two weeks leading up to opening day being face to face! The entire show was blocked in one rehearsal, making the logistics of performing a concert style show — outside — so much smoother. . . now let's just hope we don't get some patented Alberta snow in June! (It happened in 2019!)

For the first half of our performance, we proudly present; *Trial by Jury*. Unlike most Gilbert & Sullivan shows, there is no spoken dialogue in *Trial by Jury* — which was very hard for some of us! As for the second half of our performance we'd like to treat you to an assortment of numbers from your favourite G&S shows. I think you will find tonight's performance intriguing and entertaining!

Personally, I'd like to thank the production team for their support and creativity, the cast for being so flexible and accommodating, and to you, the audience, for coming out and supporting us, as we ALL navigate life during these challenging times.

*Paige Fosshiem,  
Director*

**MORPHEUS THEATRE**

**Gilbert and Sullivan's**

**TRIAL  
BY  
JURY**

PRODUCER

**Colleen Bishop**

MUSICAL DIRECTOR

**Winnifred Hume**

DIRECTOR

**Paige Fossheim**

STAGE MANAGER

**Elizabeth Schieman**

# CAST

|                                |                    |
|--------------------------------|--------------------|
| The Learned Judge.....         | George Thomson     |
| The Plaintiff, Angelina.....   | Ginette Simonot    |
| The Defendant, Edwin.....      | Kyle Gould         |
| Counsel for the Plaintiff..... | Tracy Smith        |
| Usher.....                     | Austin Arnaldo     |
| Foreman of the Jury.....       | Aaron Bartholomew  |
| Jury.....                      | Adam Arnold        |
| Jury.....                      | David Hume         |
| First Bridesmaid.....          | Evangeline Mably   |
| Bridesmaid.....                | Lisa Hoffart       |
| Bridesmaid.....                | Alicia Maedel      |
| Bridesmaid.....                | Danica Power-Smith |

# PRODUCTION CREW

|                                  |                    |
|----------------------------------|--------------------|
| Producer.....                    | Colleen Bishop     |
| Musical Director.....            | Winnifred Hume     |
| Director.....                    | Paige Fossheim     |
| Stage Manager.....               | Elizabeth Schieman |
| Assistant Stage Manager.....     | David Young        |
| Accompanist.....                 | Mike Jarzecki      |
| Costume Designer.....            | Christie Johnson   |
| Properties and Running Crew..... | Mike Johnson       |
| Sound Operator.....              | Gad Gijon          |
| Running Crew.....                | Michael Armstrong  |
| Running Crew.....                | Atreya Nittala     |
| Running Crew.....                | Peter Warne        |
| Running Crew.....                | Travis Woodward    |
| Videographer & Editing.....      | Jared Eves         |

*This production is performed in two acts with a 5-minute stretch.*

---

## PAY WHAT YOU CAN

Today's performance is *Pay What You Can*.

Thank you to all of our patrons who pre-purchased tickets to today's event.

If you did not pre-purchase your ticket, we encourage you to make a cash contribution.

We recommend \$10 to \$20 per person; however, we appreciate any amount you feel judicious.

Cash contributions can be made to any of our ushers – holding the red pails.

Credit Card contributions can be made online – [tickets.morpheustheatre.ca](https://tickets.morpheustheatre.ca), then clicking on “Gift Certificates & Passes” and choosing: Trial by Jury PWYC.

***Thank you!***

# MUSICAL NUMBERS:

## TRIAL BY JURY

Hark, the hour of ten is sounding (Chorus)  
Now, Jurymen, hear my advice (Usher)  
Is this the Court of the Exchequer? (Defendant)  
When first my old, old love I knew (Defendant and Chorus)  
Silence in Court! (Usher)  
All hail great Judge! (Chorus and Judge)  
When I, good friends, was call'd to the Bar (Judge and Chorus)  
Swear thou the Jury (Counsel, Usher)  
Oh will you swear by yonder skies (Usher and Chorus)  
Where is the Plaintiff? (Counsel, Usher)  
Comes the broken flower (Chorus of Bridesmaids and Plaintiff)  
Oh, never, never, never, since I joined the human race (Judge, Foreman, Chorus)  
May it please you, my lud! (Counsel for Plaintiff and Chorus)  
That she is reeling is plain to see! (Judge, Foreman, Plaintiff, Counsel, and Chorus)  
Oh, gentlemen, listen, I pray (Defendant and Chorus of Bridesmaids)  
That seems a reasonable proposition (Judge, Counsel, and Chorus)  
A nice dilemma we have here (Ensemble)  
I love him, I love him, with fervour unceasing (Plaintiff, Defendant and Chorus)  
The question, gentlemen, is one of liquor (Judge and Ensemble)  
Oh, joy unbounded, with wealth surrounded (Ensemble)

## CONCERT OF G&S FAVORITES

When a Merry Maiden Marries, *The Gondoliers* (Laura Pratt)  
O Poor Wandering One, *The Pirates of Penzance* (Lisa Hoffart)  
Dance a Cachucha, *The Gondoliers* (Ensemble)  
A simple sailor lowly born, *HMS Pinafore* (Evangeline)  
I'm called little buttercup, *HMS Pinafore* (Danica)  
Never mind the why and wherefore, *HMS Pinafore* (George, Alicia, Austin)  
List and Learn, *The Gondoliers* (Female cast feat. Tracy and Alicia)  
With Cat-Like Tread, *The Pirates of Penzance* (Male cast feat. Adam)  
I am the Very Model of a Modern Major-General, *The Pirates of Penzance* (Aaron)  
When all night Long, *Iolanthe* (Adam)  
My eyes are fully open, *Ruddigore* (David, Ginette, Aaron)  
*Mikado* Medley (Ensemble)



### Loved the Show? Don't forget to vote!

Each year, Calgary-ACTS recognizes exceptional community theatre.  
We hope you will show your support by nominating an individual artist or production  
at <http://www.calgary-acts.com>.

# THE ARTISTS

## Austin Arnaldo (*Usher*)



Austin's role in *Trial by Jury* is his community theatre debut. His love for stage acting and singing began when he was cast to play Fagin in the musical *Oliver!* at his junior high school. He has also taken adult intro and scene classes at the *Calgary Actors' Studio*. Austin was born in the Philippines and moved to Alberta,

Canada in 2005 with his family, who have been very supportive of his acting journey.

## Adam Arnold (*Jury*)



An Alberta-based baritone and stage director, Adam has been engaged with companies including *Calgary Opera*, *Edmonton Opera*, *Opera Kelowna*, *Mercury Opera*, the *Calgary Civic Symphony*, *Calgary Concert Opera Company*, and *Calgary's Three Sisters Young Artists*. In 2019 Adam had the privilege of commissioning composer

Stuart Beatch to write, he opens; queer love songs for baritone and piano with poetry by Matthew Stepanik. Adam is currently serving as a Section Lead with the Choir of the Cathedral Church of the Redeemer, as well as a Mentor with the Alberta branch of *Opera InReach*.

## Aaron Bartholomew (*Foreman of the Jury*)



British-Canadian Bass-baritone Aaron Bartholomew holds a Bachelor of Music in Vocal Performance from the University of Lethbridge. Recent roles include Warden Frank in *The Bat*, Commendatore in *Who Killed Don Giovanni* (both for *Cowtown Opera*), and Florian in *Princess Ida*

(*Morpheus Theatre*). He also sings at the Anglican Cathedral and with the JUNO-nominated chamber choir *Luminous Voices*. Aaron is thrilled to be returning to *Morpheus Theatre* and performing with friends new and old. Tarantara!

## Colleen Bishop (*Producer*)



Colleen spends a large portion of her time reading anything she can get her hands on and intends to do the same in the next life. She is allergic to all things furry and sometimes she has a reaction to the universe. Her loves are theatre, music, travelling and spending time with her family when they are not trying to kill her.

Time is precious. Waste it wisely. Love always to Carl, Lily and Scarlet.

## Paige Fosshiem (*Director*)



After a 1-year hiatus due to restrictions, Paige is making her triumphant return back into theatre. Last year would have marked her directorial debut with *The Pirates of Penzance*, however, the production was unfortunately postponed. She is thrilled to be jumping back into the director's seat to present *Trial by Jury*. You

would typically find her on stage or behind the scenes, ensuring everyone looks the part with Hair and Make-up but she loves taking on new challenges, stepping outside her comfort zone and learning new things.

## Kyle Gould (*The Defendant, Edwin*)



Kyle is back for another G&S and is overjoyed at this opportunity to expand his repertoire. You've seen Kyle in a lot of *Morpheus* shows over the last seven plus years and this one is especially exciting to be with friends new and old as something to look forward to during these difficult times.

### Lisa Hoffart (Bridesmaid)



Lisa was born in the “don’t blink or you’ll miss it” town of Burstall, Sk. Her favourite roles include Police/Pirate in **The Pirates of Penzance** (*Morpheus*), and Dorcas of **Seven Brides for Seven Brothers** (*Cowtown Opera*). Lisa attended *Cowtown Opera Summer Academy* in 2019 and was a Platinum Award recipient at *Kiwanis Festival*

2019. One of the things she loves about performing the great music of Gilbert and Sullivan with *Morpheus Theatre* is the way this theatre company embraces the challenge of the score and silly plots of G&S.

### David Hume (Jury)



David is pleased to be in his fourth show and second G&S with *Morpheus Theatre*. With *Morpheus*, he was most recently seen as Max in **Lend Me a Tenor** and Paul in **Moon Over Buffalo**. He also participates with the *Calgary Opera Chorus*. When not on stage, he hides up at home with his family - a family he is grateful to for supporting his stage habit.

### Winnifred Hume (Musical Director)



Win is extremely pleased to be music director for the first *Morpheus Theatre* Gilbert & Sullivan offering post-pandemic. Most recently, she was MD for **Princess Ida** (*Morpheus Theatre*), and **The Hunchback of Notre Dame** (*Cappuccino Musical Theatre*). Win also music directs for the *Morpheus Theatre* G&S Junior Theatre School.

### Mike Jarzecki (Accompanist)



Mike is thrilled to be back performing live theatre after the long hiatus of the art-form as a whole. Back for his 6<sup>th</sup> Gilbert and Sullivan production, and his 5<sup>th</sup> playing the part of an entire orchestra, Mike would like to thank everyone at *Morpheus* for the opportunity to work on so many fun shows over the years. As

thrilled as he is to perform, Mike would especially like to send one simple message to everyone in attendance, be it in person or virtually: welcome back!

### Christie Johnson (Costume Designer)



Costume designer, milliner, and historical costumer. She has worked as a costume designer on numerous productions, most recently on *Simply Theatre's California Suite* and *FRC's Boy From Oz*. Some of her other costuming credits include **Shakespeare in Love**, **Iolanthe**, **Moon over Buffalo**, **Death of a Salesman**, and **My**

**Fair Lady** (creating almost 50 custom hats). Christie has also created period costumes for historical sites including Loughheed House, Fort Calgary and Fort Steele.

### Michael Johnson (Properties)



Steampunk Artist and gadgeteer. Michael creates retro Victorian pieces, merging modern technology with a Victorian aesthetic. He has done props and set décor on numerous productions for *Morpheus* and other theatre companies.

### Evangeline Mably (First Bridesmaid)



Evangeline is a passionate advocate for the arts for kids and youth. She works tirelessly to develop arts programming in her schools and community and encourages students to explore their artistic talents. Selected theatre credits include: **A Christmas Carol**, **Martha Scatchit** (*Morpheus Theatre*); **Scorpio Tonight** (*Scorpio Theatre*); and **Moon Legends**, Chorus (*Sidenote Theatre/DIY Theatre*).

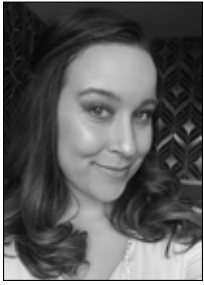
When Evangeline isn't singing, playing the piano, or teaching, she loves to read, hike, and sample fancy wine. Instagram @evamably.

### Alicia Maedel (Bridesmaid)



Alicia firstly wants to welcome you to the show and thank you for being here with her today. She has acted in the *Heritage Park Christmas musical*, portrayed Lenny in **Crimes of the Heart** with CAT and acted Sara in the **just acts play festival** as well. It has been an absolutely wonderful experience to be a part of **Trial by Jury** even though it has been unconventional she wouldn't change it. Enjoy the show.

**Danica Power-Smith** (*Bridesmaid*)



Danica is immensely pleased to be a part of *Morpheus Theatre's Trial by Jury*, working alongside such greatly talented humans! This is her debut with *Morpheus Theatre*, but is no newcomer to the stage; she has had numerous roles in school productions, both leading and supporting.

**Tracy Smith** (*Counsel for the Plaintiff*)



Tracy is looking forward to returning to *Morpheus* for her 9th production. She has kept up with virtual singing and a bit of performing during the past year and a half. Excited to have an opportunity for a live performance. Hope you all enjoy this bit of courtroom silliness.

**Elizabeth Schieman** (*Stage Manager*)



Elizabeth has been involved in community theatre in Calgary and several other places across Canada for many years now, mostly as a Stage Manager and a Lighting Designer. This is her fourth show with *Morpheus*, and her second foray into G&S. She is excited to be working with such a great cast and crew

and hopes you all enjoy the show!

**George Thomson** (*The Learned Judge*)



A long-time lover of the outdoors, George is intrigued to add G&S to hiking and biking in the fresh air this Summer. Last seen as Beetlejuice for the *Heritage Park Players* (also outdoors in unseasonably warm 2020 Halloween) George has appeared in the last three G&S productions with *Morpheus*, indoors.

George thanks his family for their patience through many Zoom rehearsals and hopes for an unseasonably warm June. Shout out to essential workers; Thank You!

**Ginette Simonot** (*The Plaintiff, Angelina*)



Ginette Simonot is a Calgary-area actor, singer, dancer, and Theatre Administration professional. She's been "playing pretend" and dressing up in costumes for as long as she can remember and loves to sing any styles and tell goofy stories. Previous G&S credits include: **Princess Ida** (Melissa) **HMS Pinafore**

(Assistant Director), **Iolanthe** (*Iolanthe*), **The Pirates of Penzance** (Edith), and **The Gondoliers** (Tessa). Huge thanks to Sean who has continued to be a source of hope and a driving force in keeping *Morpheus Theatre* vibrant in this hard time.

**David Young** (*Assistant Stage Manager*)



David is thrilled to be helping such a talented cast and crew to put on a live theatre show while keeping everybody safe. After such a long absence the music of Gilbert and Sullivan is even more appreciated.



ARC is Global We Are Where You Are.



## Did You Know?

**ARC Document Solutions is your one stop shop!**

- Window Graphics
- Banners
- Marketing Materials
- Trade Shows
- Annual Reports
- Signage
- Posters
- Brochures
- Stationery
- Graphic Design
- Variable Data
- Mailers



**ishipdocs** Digital Document Shipping. The fastest way to deliver plans, specs and docs.

LOCAL

GLOBAL

RESPONSIVE

240 LOCATIONS WORLDWIDE

### ARC Document Solutions | Western Canada

Suite 110, 540 - 5 Ave SW, Calgary, AB T2P 0M2

main: 403 228 5155 | fax: 403 244 1193

email: calgary@e-arc.com

Calgary | Victoria/Saanichton | Nanaimo | Metro Vancouver

www.e-arc.ca | 240+ ARC locations worldwide



**Quick Print**  
GRAPHIC SERVICES

[www.QPCalgary.com](http://www.QPCalgary.com)

**George Vanderveen**

**T** 403.242.3113

**F** 403.246.7832

**E** [George@QPCalgary.com](mailto:George@QPCalgary.com)

Suite 1, 5508 1<sup>st</sup> Street SE  
Calgary, Alberta T2H 2W9



# FRONT-OF-HOUSE

Front of House Manager: Byron Hynes

## USHERS & VOLUNTEERS

Kate Ahlf  
Ron Aubrey  
Gabriel Barrett  
Michele Barrett  
Judy Boyes  
Reg Brehaut  
Karen Choy  
Jason Donev  
Sara Drabinsky  
Zena Drabinsky  
Sue Draychuk  
Amber Dujay

Barb Frash  
Etta French  
Dan Gibbins  
E Alana Gowdy  
Lena Hrach  
Trina Huff  
Laura L  
Parmar M  
Jack Melnyk  
Bruce Mottle  
Rhonda Mottle  
Lorraine O'Neill  
Daisy Pond

Tara Richard  
Alexia Sabau  
Cristina Sabau  
Cesar Salvater  
Marnie Shaw  
Jud Shearing  
Judy Shearing  
Keith Thompson  
Ann Tyrell  
Denise Vaile  
Ben Wagler  
Jeri Wallis.



Morpheus Theatre is a registered charity.  
Tax donations of \$20 or more will  
receive a charitable receipt.  
Sponsorship opportunities are also available!

Info/Tickets: (403) 246-2999  
info@morpheustheatre.ca  
www.morpheustheatre.ca

# SPECIAL THANKS

Aaron Bartholomew, Bill Brown, Kyle Gould, Margaret Harper,  
Jude Harrison, Kathy Hubbard, Sabrina Mueller, Matt Watterworth,  
Bahatia Cloth House, the Staff at the Pumphouse Theatre,  
and anyone we may have missed.

## COVID-19 SAFETY PROTOCOLS

Morpheus Theatre would like our patrons to know that we observed Alberta's recommended health guidance and safety protocols at every step of the process. The health and wellbeing of every member of our cast, crew and audience was our primary concern.

These protocols include:

- ◇ The audition process was completely online.
- ◇ Rehearsals through April and May were held over Zoom. Starting with Stage 1 on June 1<sup>st</sup> we started in-person rehearsals outside with physical distancing and masks. All production team members also needed to complete a daily health check.
- ◇ All production meetings were held over Zoom .
- ◇ Costume sizing was done initially over Zoom, with costume fittings completed outdoors, with physical distancing and masking.
- ◇ Microphones used in the production are assigned to individual performers, and are not shared.
- ◇ Crew members wear face masks at all times (even outdoors) during the setup and tear down of the stage.
- ◇ Cast members are requested to prepare for the show at home prior to arriving at the theatre. This includes doing their hair, makeup and vocal warmup.
- ◇ The dressing rooms and greenroom are restricted to cast members only. Cast members must wear a mask or face shield while backstage before and after the show.
- ◇ Per current Stage 2 guidelines, face masks are not required for cast members during the performance, and they may stand closer than 6 feet to other performers.
- ◇ Although indoor performances are allowed, Morpheus Theatre has chosen to present this show outdoors. Audience members must be seated 6 feet from other patrons.
- ◇ Front of House staff will wear masks and/or face shields when interacting with patrons.
- ◇ Chairs and tables are cleaned following each performance.

If you have any questions about our safety protocols,  
please feel free to contact our Artistic Director at [info@morpheustheatre.ca](mailto:info@morpheustheatre.ca)

